

The RDU™ is available for use with the VSR-1200™ for serial port expansion.

## Remote Data Unit

### THE PRODUCT

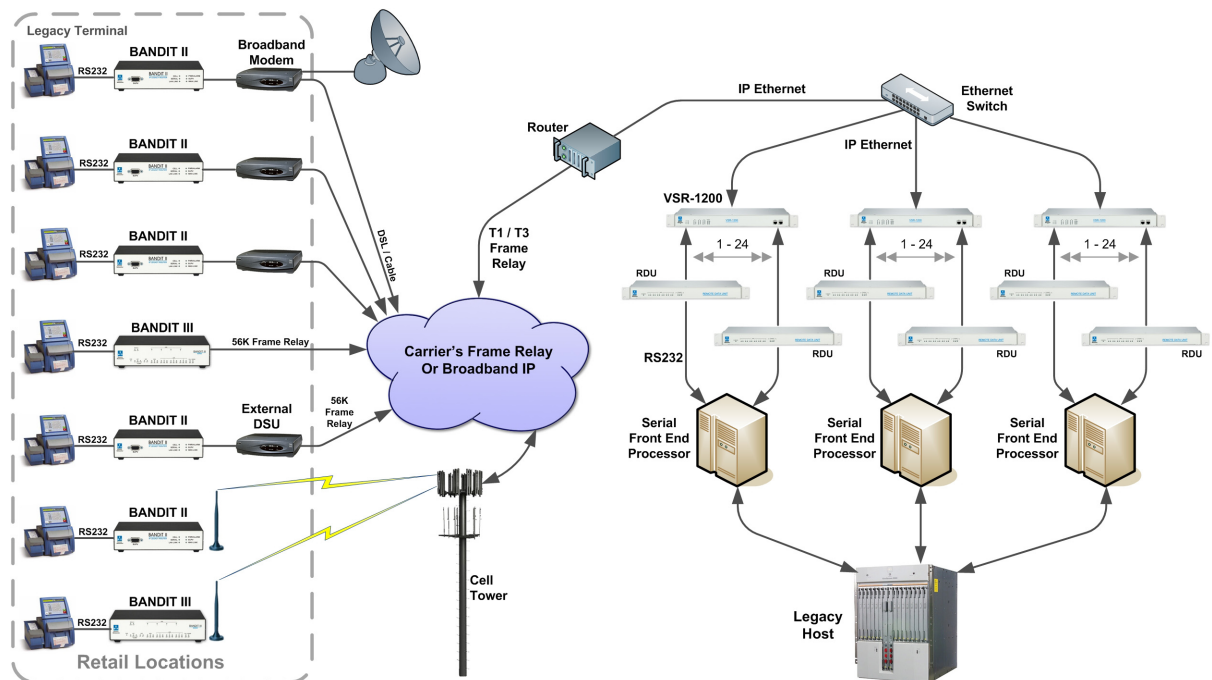
The Remote Data Unit (RDU™) is a high density serial port expander module that has 12 DB25 serial ports and 1 Ethernet port. The RDU™ is available for use with the VSR 1200™ product for serial port expansion. Each serial port on this module can handle both sync/ async legacy data protocols, supporting up to 240 remote terminals per RDU™, with the assumption of 10 sites per serial port.

The connectivity between the RDU™ module and the VSR 1200™ takes place over a 10baseT Ethernet port providing flexible mounting locations.

The VSR 1200™ is integrated with best-of-breed IP VPN features, IP routing, advanced QoS, dynamic packet inspection firewall, embedded address management capabilities, and legacy data support via a high-density RDU™ serial module. Such flexibility provides stateful-inspection firewall, with the scalable performance needed for the most demanding network applications.



### Serial Application Diagram - Multi-Network

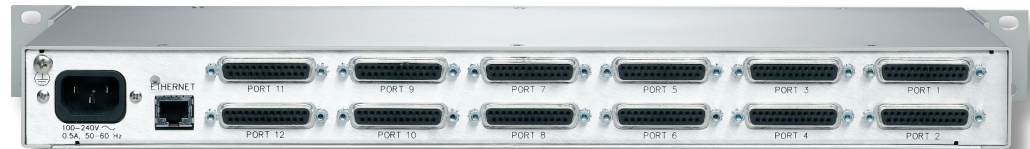


The figures below show the front and the rear of the RDU™. (Note that the RDU™ has its own AC power connection. The front of the RDU™ has 12 LEDs, one for each serial port. Please refer to Encore Networks product manuals for description of the LED states for the RDU's serial ports.

Figure 1. Remote Data Unit, Front



Figure 2. Remote Data Unit, Rear



## Technical Specifications

### CAPACITY

<b>Serial ports:</b>	12 ports per module
<b>Remote terminals per module:</b>	Up to 20 polled remote terminals per port and up to 240 remote terminals per a single RDU™ module, depending on application
<b>Capacity per a single module:</b>	Up to 3Mbps throughput per a single module
<b>Speed of async/sync port:</b>	Up to 115kbps

### PHYSICAL SPECIFICATIONS

The RDU™ is designed for quick and easy integration with the BANDIT™ portfolio and other equipment in a typical networking environment.

<b>Height:</b>	1.75 in.; 4.45 cm
<b>Width:</b>	19 in.; 48.26 cm
<b>Depth:</b>	8.3 in.; 21.08 cm
<b>Weight:</b>	4 lb.; 1.81 kg
<b>Installation Type:</b>	Rackmount (1u)

Each serial port on the RDU™ is a DB25 female connector, physical DCE RS-232. A DB25-to- DB25 crossover conversion cable is to be used if a physical DTE interface is required.

The front of the RDU™ has 12 LEDs, one for each serial port.

### ELECTRICAL

100 to 240 VAC, 50–60 Hz, autorangeing, with a locking connector.  
10 watts MAXIMUM; the power supply delivers 3.3 volts DC to the RDU™.

### ENVIRONMENTAL SPECIFICATIONS

<b>Temperature:</b>	32° to 104° F (0° to 40° C)
<b>Humidity:</b>	10% to 85% non-condensing
<b>Altitude:</b>	Up to 10,000 ft. (3,048 m)



*Specifications subject to change*

