

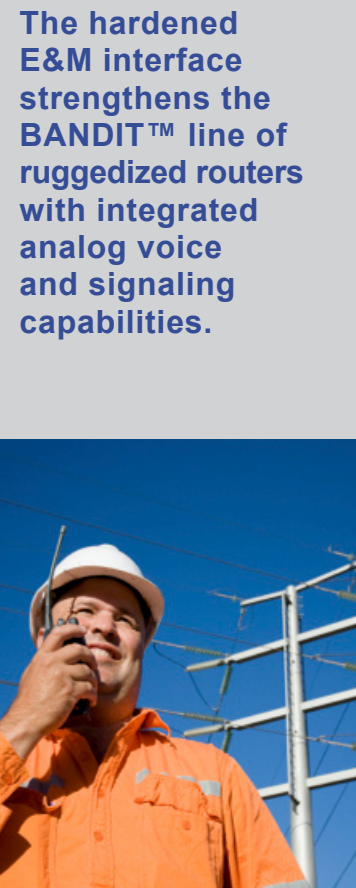
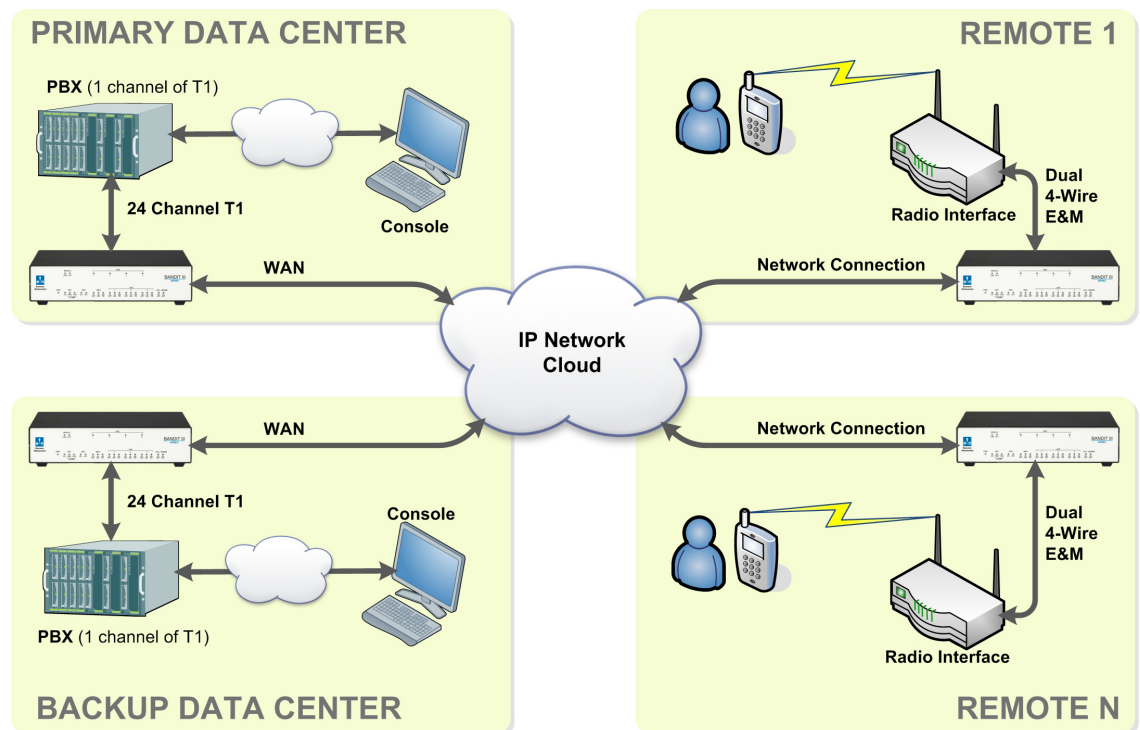
## Ruggedized BANDIT 3™ Router with Integrated E&M Capabilities

The BANDIT 3™ integrated hardened 4-wire E&M Module connects two analog voice or data circuits to an IP packet network, via standard 8-pin (RJ-45) interface jacks. The E&M module can be configured to support multiple applications like voice trunk circuits or analog signaling circuits for applications such as PBX or analog radio backhaul. Using Encore Networks value-added voice encapsulation ITU G.726 compression algorithm reduces bandwidth requirements and maintains toll-quality voice and signalling for transport over packet based networks efficiently. This enables the build out of IP packet based network connectivity while continuing to use currently deployed analog equipment infrastructure. The E&M module has the following feature set:

### Summary Points

- ▶ Dual 4-wire interface - E&M Types I, II, III, IV and V
  - 600 ohm input impedance
  - Adjustable transmit and receive gain in 0.2 dB steps
    - Transmit at 6 dB
    - Receive at 5 dB
  - Idle Channel Noise, C-message Weighted < 18 dBrc0
  - Supports the following CODEC types:
    - ITU G.726 - 16/24/32 kbps
  - Selectable frame size
  - Automatic Clock recovery for end-to-end synchronization
- ▶ Fully hardened interface to IEC 61850 specifications

### Application Diagram



Extends CAPEX protection of analog equipment, while leveraging IP packet based network connectivity.