

DMNR in the EN-2000

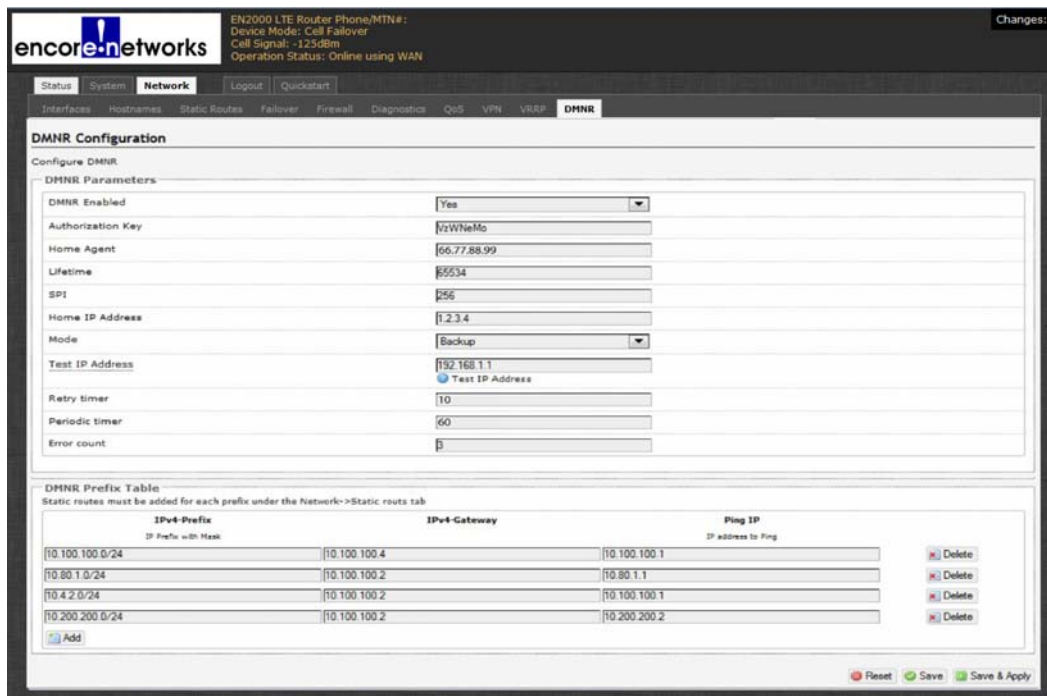
This document discusses implementation of dynamic mobile network routing (DMNR) in the EN-2000.

7.1 Setting Up DMNR

Note: Get all parameter values from your network administrator.

- 1 On the EN-2000 management system, select the **Network** tab.
- 2 Then select the **DMNR** tab.
 - ❖ The DMNR Configuration Screen is displayed (Figure 7-1).

Figure 7-1. DMNR Configuration Screen



- 3 On the DMNR Configuration Screen, under the heading **DMNR Parameters**, configure the following items:

- **DMNR Enabled** Yes

- **Authorization Key** A character string used for access to the mobile network. Get this value from your network administrator.
- **Home Agent** IP address for registering the mobile device on the mobile network. Get this value from your network administrator.
- **Lifetime** Number of seconds until the authorization key expires. Get this value from your network administrator.
- **SPI** The security parameter index. Get this value from your network administrator.
- **Home IP Address** Consult your network administrator for the value to use.
- **Mode** **Primary** if the cellular wireless connection is the default route
Note: If this connection fails, the Ethernet connection is used immediately.
Backup if the Ethernet connection is the default route
Note: If this connection fails, the cellular wireless connection is used immediately.
- **Test IP Address** The IP address to use for testing the cellular wireless connection
Note: This parameter is displayed only if the **Mode** is **Backup**.
- **Retry Timer** The number of seconds to wait after sending a registration request before sending another registration request
- **Periodic Timer** The number of seconds to wait after timing out before starting another set of registration requests
- **Error Count** The maximum number of times to request registration before timing out

4 Under the heading **DMNR Prefix Table**, view the prefix table.

5 Do one of the following:

- a** If you wish to modify a record, make the changes in one or more fields of that record.
- b** If you wish to delete a record, select the **Delete** button at the far right of that record.
- c** If you wish to add a record, select the **Add** button at the lower left of the screen.

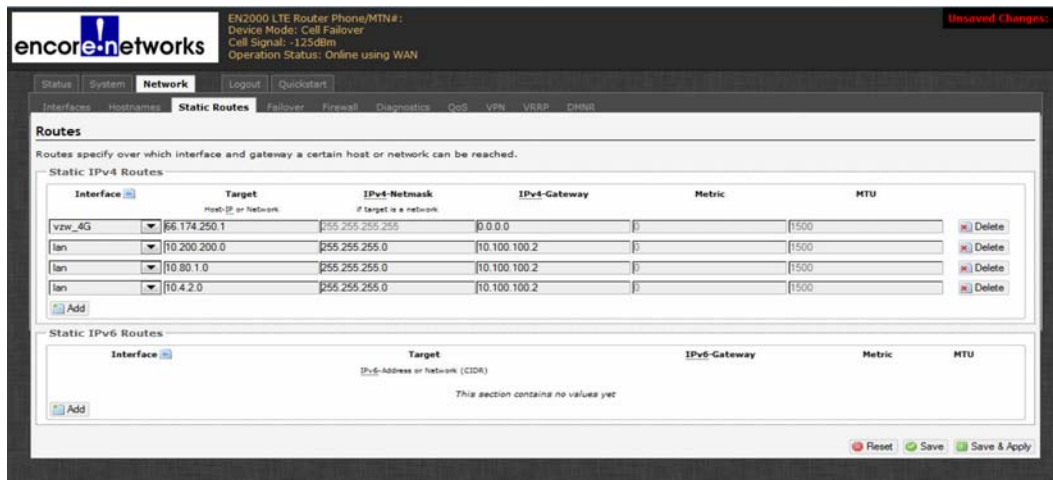
❖ A new, empty record is displayed. Perform [step 5](#) for that new record.

6 When you have finished configuring the DMNR parameters and prefix table, select the **Save & Apply** button.

❖ The changes are saved and are used immediately.

- 7 On the EN-2000 management system, select the **Network** tab.
- 8 Then select the **Static Routes** tab.
 - ❖ The Static Routes Screen is displayed (Figure 7-2).

Figure 7-2. Static Routes Screen



- 9 Under the heading **Static IPv4 Routes**, view the static routing table.
- 10 Do one of the following to configure a static route for each entry in the DMNR Prefix Table (recall Figure 7-1):
 - a If you wish to modify a record, make the changes in one or more fields of that record.
 - b If you wish to delete a record, select the **Delete** button at the far right of that record.
 - c If you wish to add a record, select the **Add** button at the lower left of the screen.
 - ❖ A new, empty record is displayed. Perform [step 10](#) for that new record.
- 11 When you have finished configuring the static routing table, select the **Save & Apply** button.
 - ❖ The changes are saved and are used immediately.

