

System Administration Screens in the EN-4000

The EN-4000 is the newest member of Encore Networks' family of routers. It provides wireless and cabled connections to a local area network (LAN) and to peripheral devices and remote devices.

The screens in this document are used only by system administrators and network administrators. The screens are shown here only for reference.

Figure B-1. System Screen to Schedule Tasks

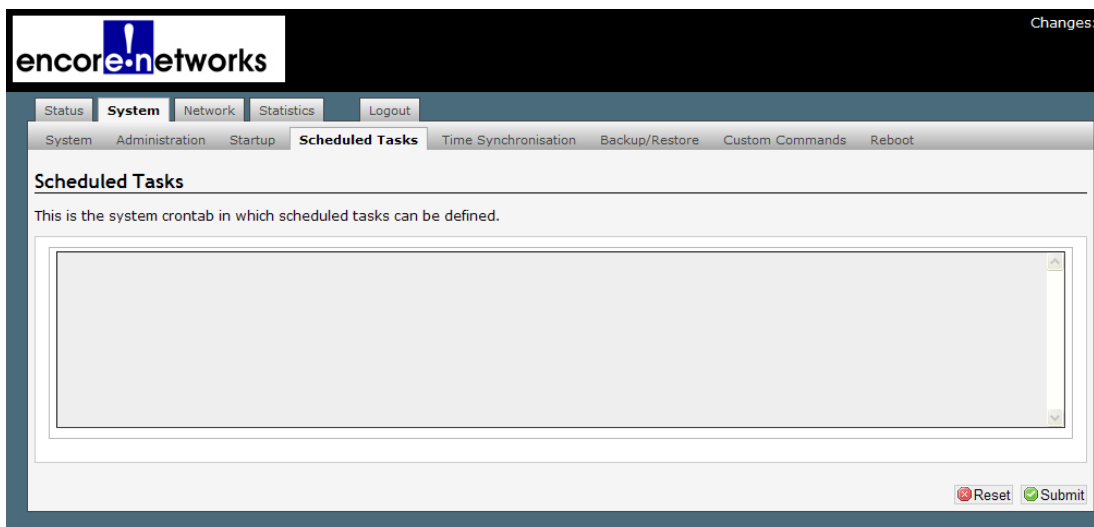


Figure B-2. System Custom Commands Dashboard Screen

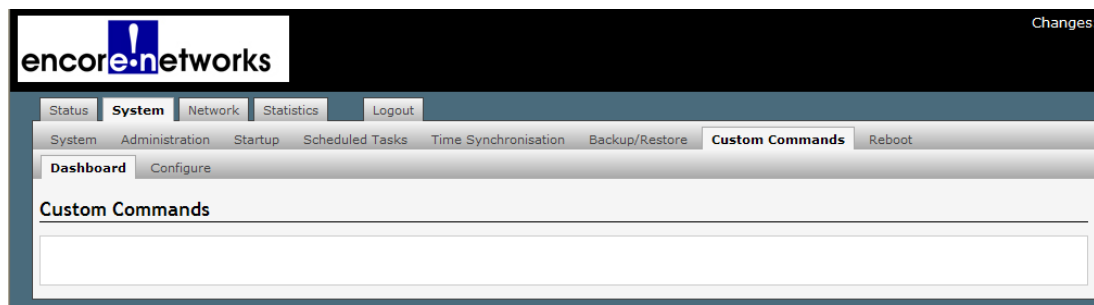


Figure B-3. System Custom Commands Configuration Screen

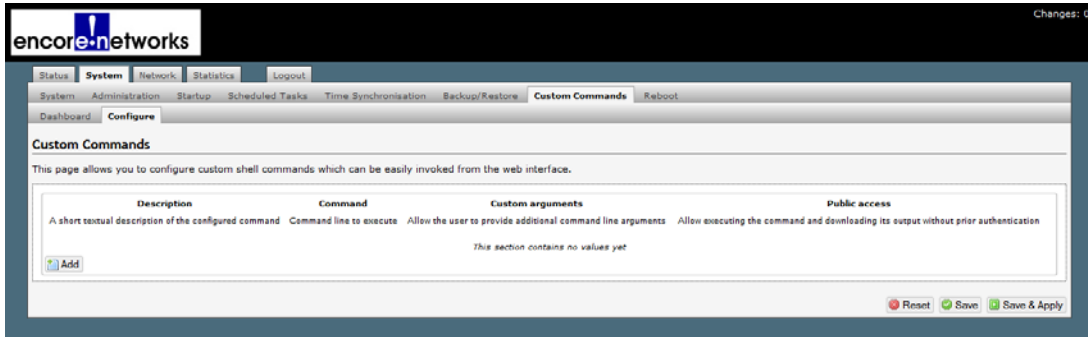


Figure B-4. System Administration

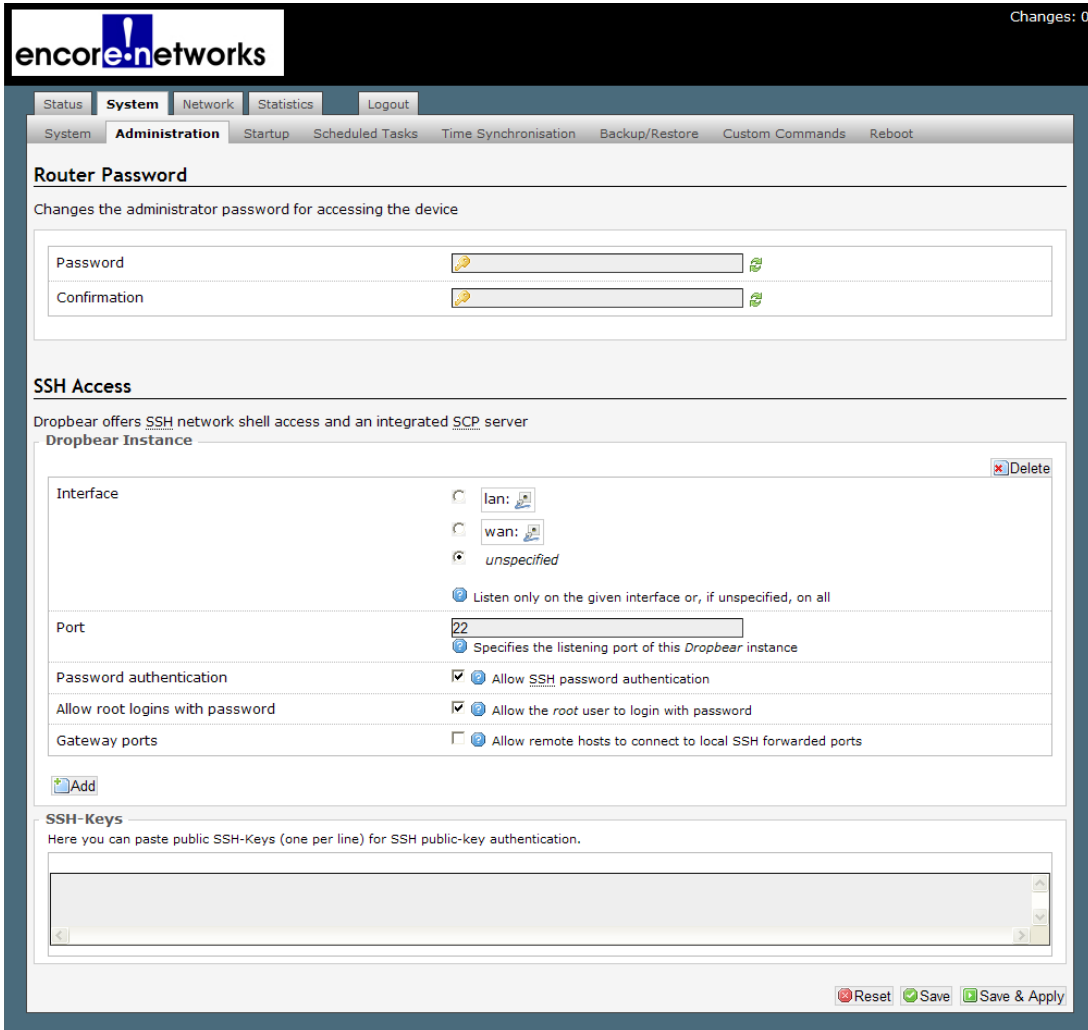


Figure B-5. System Start-Up Screen

The screenshot shows the 'System Start-Up' screen in the Encore Networks management interface. The top navigation bar includes 'System', 'Network', 'Statistics', and 'Logout'. Below this, a secondary navigation bar has 'System', 'Administration', 'Startup' (selected), 'Scheduled Tasks', 'Time Synchronisation', 'Backup/Restore', 'Custom Commands', and 'Reboot'. The main content area is titled 'Initscripts' and contains a table of installed init scripts. A warning message states: 'Warning: If you disable essential init scripts like "network", your device might become inaccessible!'. Below the table is a 'Local Startup' section with a text area for custom commands and 'Reset' and 'Submit' buttons.

Initscripts

You can enable or disable installed init scripts here. Changes will be applied after a device reboot.
Warning: If you disable essential init scripts like "network", your device might become inaccessible!

Start priority	Initscript	Enable/Disable	Start	Restart	Stop
2	smtptmpd	Disabled	Start	Restart	Stop
5	luci_fixtime	Enabled	Start	Restart	Stop
10	boot	Enabled	Start	Restart	Stop
11	procd	Enabled	Start	Restart	Stop
20	network	Enabled	Start	Restart	Stop
39	usb	Enabled	Start	Restart	Stop
45	firewall	Enabled	Start	Restart	Stop
50	cron	Enabled	Start	Restart	Stop
50	dropbear	Enabled	Start	Restart	Stop
50	qos	Enabled	Start	Restart	Stop
50	snmpd	Enabled	Start	Restart	Stop
50	telnet	Enabled	Start	Restart	Stop
50	tftpd-hpa	Enabled	Start	Restart	Stop
50	uhttpd	Enabled	Start	Restart	Stop
50	vrrpd	Enabled	Start	Restart	Stop
59	luci_dhcp_migrate	Enabled	Start	Restart	Stop
60	dnsmasq	Enabled	Start	Restart	Stop
60	samba	Enabled	Start	Restart	Stop
79	luci_statistics	Enabled	Start	Restart	Stop
80	collectd	Enabled	Start	Restart	Stop
95	done	Enabled	Start	Restart	Stop
96	led	Enabled	Start	Restart	Stop
97	watchdog	Enabled	Start	Restart	Stop
98	sysntpd	Enabled	Start	Restart	Stop
99	multiwan	Enabled	Start	Restart	Stop
99	mwan3	Enabled	Start	Restart	Stop
99	qmi-start	Enabled	Start	Restart	Stop
99	sysctl	Enabled	Start	Restart	Stop

Local Startup

This is the content of /etc/rc.local. Insert your own commands here (in front of 'exit 0') to execute them at the end of the boot process.

```
# Put your custom commands here that should be executed once
# the system init finished. By default this file does nothing.
endefaultsd -y -u /dev/ttyUSB2 -i wwan0 0 0x26 w
exit 0
```

Reset Submit

Figure B-6. System Back-Up Actions

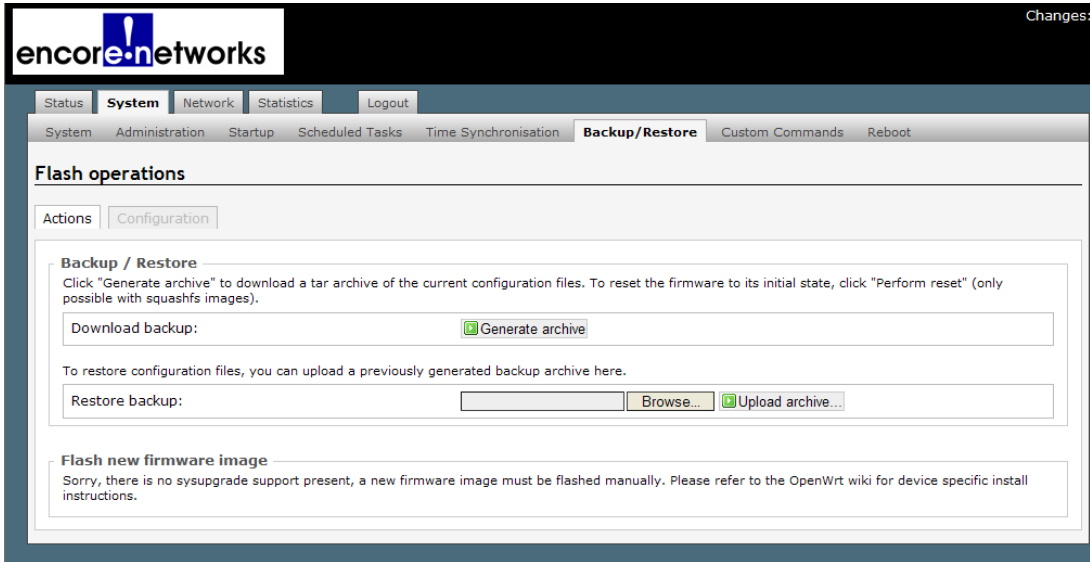


Figure B-7. System Back-Up Configuration

