

## BANDIT II and BANDIT III Quick Configuration Guide

### 3<sup>rd</sup> of 3 QuickStart Guides for the BANDIT II and the BANDIT III

The BANDIT II™ and the BANDIT III™ are ROHS-compliant devices in the BANDIT™ product family. The chassis also have models that been hardened for performance in environmentally harsh conditions.

Figure 1 illustrates a sample satellite network. The diagram has blanks for IP addresses. You can fill these blanks with information for configuring the network devices.

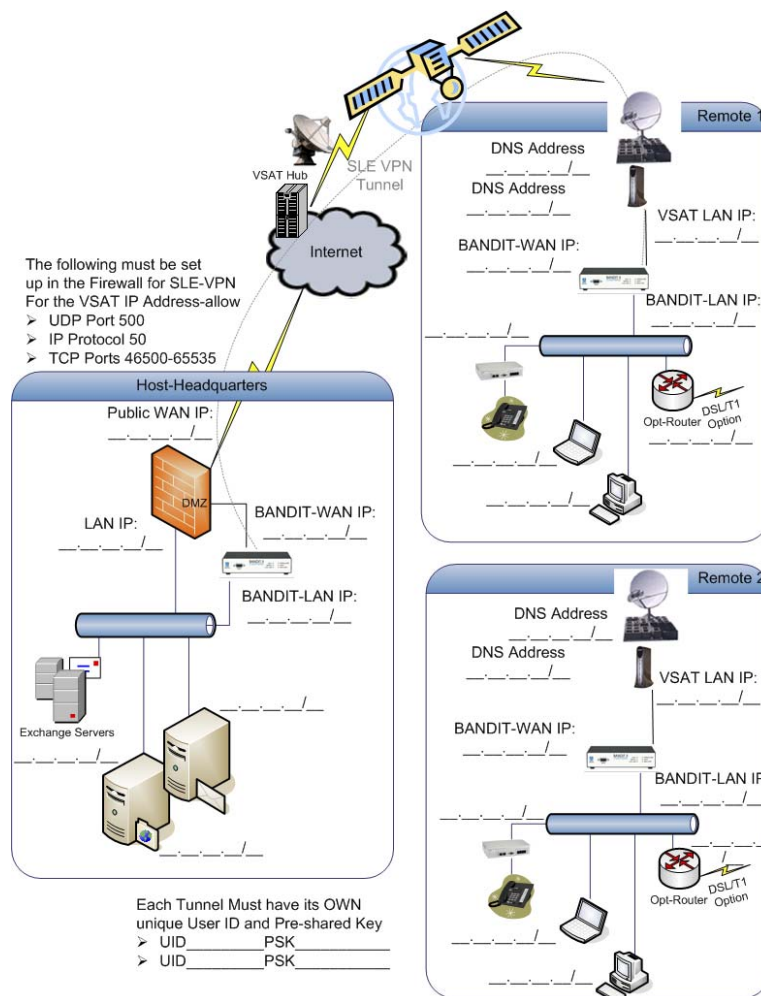


Figure 1. Sample Satellite Network

## Configuring the Initiating Device

- 1 On the initiator unit, log into the BANDIT. After the Main Menu has been displayed, select:

**Quickstart Config Builder**

- 2 Then select:

**GENERIC**

- 3 Then select:

**Ethernet WAN VPN Gateway (Initiator)**

- 4 Then configure the parameters as shown below.

Startup Configuration Parameters

-----

1) System Name : (Give any name here)

2) LAN Interface IP : (Give Lan IP and subnet here)

3) WAN Interface IP : (Give Wan IP and subnet here)

4) Primary DNS Server : (Give your DNS IP address here)

5) VPN Gateway : (The VPN Gateway address is the WAN IP address of the TERMINATING Bandit II or III)

6) VPN User ID : (Enter VPN User ID here. NOTE: They MUST match on both Bandit II or III units)

7) VPN Pre-Shared Key : (Enter VPN Pre-Shared Key here. NOTE: They MUST match on both Bandit II Or III units)

8) Remote Ping/Subnet : (The Remote Ping/Subnet is the LAN IP address of the Terminating Bandit II or Bandit III)

- 5 After parameters 1 to 8 (listed above) have been configured, choose:

L) Load Above Config

- 6 Then select:

Y)Yes

- 7 Then select:

R)Reset

- 8 Then select:

Y) Yes

- 9 Press the ENTER key on your keyboard. You will see the following message.

Unit resetting.

## Configuring the Terminating Device

- 1 On the terminating unit, log into the BANDIT. After the Main Menu has been displayed, select:

QuickStart Config Builder

- 2 Then select:

GENERIC

- 3 Then select:

Ethernet WAN VPN Gateway (Terminator)

- 4 Then configure the parameters as shown below.

Startup Configuration Parameters

-----

- 1) System Name : (Give any name here)
- 2) LAN Interface IP : (Give Lan IP and subnet here)
- 3) WAN Interface IP : (Give Wan IP and subnet here)
- 4) VPN User ID : (Enter VPN User ID here. NOTE: They MUST match on both Bandit II or III units)
- 5) VPN Pre-Shared Key : (Enter VPN Pre-Shared Key here. NOTE: They MUST match on both Bandit II or III units)

- 5 After parameters 1 to 5 (listed above) have been configured, choose:

L) Load Above Config

- 6 Then select:

Y)Yes

- 7 Then select:

R)Reset

- 8 Then select:

Y) Yes

- 9 Press the ENTER key on your keyboard. You will see the following message.

Unit resetting.

- 10 Now get back to the Main Menu of the terminating unit and choose:

2) Typical Configuration

- 11 Then select:

5) IP/VPN Policies

- 12 Then select:

2) Policy Table

**13** Then select:

M) Modify entry #1

**14** Go to DESTINATION ADDRESS (LOW) and also DESTINATION ADDRESS (HIGH) and enter the COMPLETE subnet range of the INITIATOR's LAN range.

**15** Once you have entered this information, press the ESC key. If it asks to SAVE CHANGES, press Y) YES.

**16** Keep pressing the ESC key back to the Main Menu. Then select WRITE and RESET.

At this point, the configuration is done.

## Notes

If you have a firewall or a router in front of the BANDIT devices, make sure the following ports are opened in both directions:

- IP Protocol 50
- UDP Port 500
- TCP Ports 46500 through 65535

## Statistics

**1** After both units are completely configured and reset, get to the Main Menu for one of them, and choose:

S) Statistics

**2** Then select:

V) VPN

**3** Look at the bottom of the first screen and see "Number of Tunnels Up." It should be 1.

**4** Press the spacebar to get to the second page and look up at the top at the MINUTES and SECONDS.

**5** Keep refreshing the screen by pressing your spacebar and monitor this until it gets passed the 2 minute, 5 second mark.

**Note:** If the tunnel stays up after that point you are good to go. If it drops after 2 minutes and 5 seconds you still have items to address in the network.

## Additional Configuration

After you have done this, if you want to add subnets from the HQ side to the Remote side, perform the following procedures.

### A More Configuration on the Remote Unit

**1** On the Main Menu, select:

2) Typical Config

- 2 Then select:
    - 5) IP/VPN Policies
  - 3 Then select:
    - 2) Policy table
  - 4 Then select:
    - C) Copy # 1 and insert before #2
  - 5 Then select:
    - M) Modify #2
  - 6 Change the Destination address (Low and High) to that of the other subnet, at the HQ side.
  - 7 Add more entries to the policy table, if needed.
- Note:** Make sure the ALLOW ALL entry stays at the bottom of this list.
- 8 Once you are done, press ESC. If it prompts you to SAVE CHANGES, press Y) YES.
  - 9 ESC back to the Main Menu and WRITE and RESET unit.

## **B More Configuration on the HQ Device**

- 1 On the Main Menu, select:
  - 2) Typical Config
- 2 Then select:
  - 3) IP Static Routes
- 3 Then select:
  - A) Add
- 4 Add a route in here pointing to the other subnet, enter that subnet mask, and the next hop router to get there.
- 5 ESC back to Typical Configuration menu. Select the following:
  - 5) IP/VPN Policies
- 6 Then select:
  - 2) Policy table
- 7 Then select:
  - C) Copy # 1 and insert before #2
- 8 Then select:
  - M) Modify #2
- 9 Change the SOURCE address (Low and High) to that of the other subnet, at the HQ side.

**10** Add more entries to the policy table, if needed.

**Note:** Make sure the ALLOW ALL entry stays at the bottom of this list.

**11** Once you are done, press ESC. If it prompts you to SAVE CHANGES, press Y) YES.

**12** ESC back to the Main Menu and select WRITE and RESET unit.

**Note:** Also see the [BANDIT II and BANDIT III Expanded Configuration Guide](#).